



Drop Lock Laminate Flooring Installation Guide

PREPARATION

1. Get enough flooring to complete your project: Measure the length & width of your room. If the room has alcoves or offsets, measure these separately. This will give you the square footage of the room. Please account for 10% extra to cover mistakes, trimming and/or for future needs or replacement.

Helpful Notice: For best results, purchase product (cases) from the same run number (dye lot). Different run numbers can have shade variations. Every case of flooring has the run number printed on the ends of the case (example: 28.03.2010). If you have more than one run number, we highly recommend you install planks from 4 or 5 different cartons from different run numbers at one time and randomly mix them into the installation as you go. This will insure a more natural-looking floor.

CAUTION: Do not install Designer Choice Laminate over carpet or any unapproved foam or underlayment. This product is not suitable for any outside use, sunrooms/solariums, saunas, or rooms that have the potential of flooding. We also highly recommend you do not install in rooms or homes that are not temperature controlled. Exposure to long-term direct sunlight can cause damage to your floor.

CHECK THE PLANKS BEFORE INSTALLING THEM TO BE SURE OF APPEARANCE.

We maintain strict quality control at the factory, but it is a good idea to check each plank for blemishes or flaws. Return any such planks to your dealer for replacement.

PLAN ADEQUATELY FOR TRANSITIONS.

If the room is more than 40' x 25', or if the floor spans between two separate temperature-controlled rooms, a floating floor requires a transition to keep the floor from separating.

2. Condition Designer Choice Laminate prior to installation:

You must place laminate horizontally in the room of installation for 48 hours prior to installation. Be sure the room temperature is between 65° & 85° F. Do not remove the planks from the case during this acclimation period! Maintain temperature during installation as well.

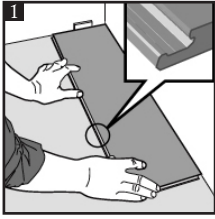
Helpful Notice: When installing Designer Choice Laminate, please keep dust, dirt, or foreign particles away from the locking strip. The cleaner the locking strip, the better the bond between planks. The laminate flooring is best kept in the box until you are ready for installation.

3. Subfloor preparation:

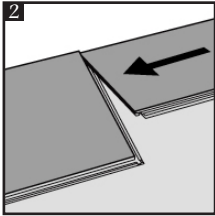
The subfloor surface must be smooth, flat, dry, clean and solid. Carpet staples or adhesive residue must be removed to insure proper installation. Subfloors should be flat within a tolerance of 1/8" (3mm) over a span of 4 feet. Any unevenness over 1/8" (3mm) must be sanded down or filled with a floor leveler. Voids or humps in the subfloor will prevent laminate from locking properly. Subfloors must be carefully checked for moisture problems.

Helpful Notice: Inspect the subfloor for excessive moisture before installation. Installation is feasible with the moisture under 40%, and it is unsuitable to install with the moisture over 60%. A way to test the moisture is to place a couple of planks flat on the subfloor, wait 6-12 hours, and then check the plank for any signs of moisture.

INSTALLATION

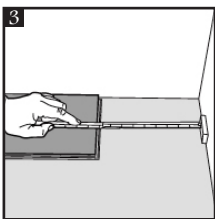


1. Place a 3/8" wide spacer along the wall. Position the plank with the length of the board against the wall and the end of the board against the spacer. You should have placed the board so that the groove sides are out and are showing.

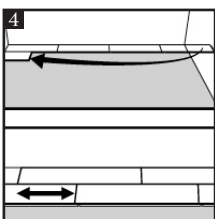


2. Place your second plank against the wall and drop the lip of the second plank onto the groove of the first plank. You should now have 2 planks tightly fitted together, both running along the same wall.

**When locking the ends of the planks together, the planks will not fully lock together until you install the next run.*

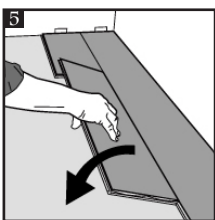


3. Continue laying the boards end to end along the wall. When you get to the end, cut a board to fit leaving a 3/8" gap for expansion.



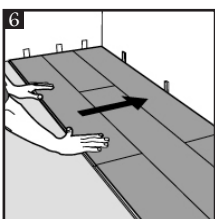
4. Begin laying your second row of boards. Make sure that you first board is at least 8" shorter than the first board you laid on the first row. The piece that you cut at the end of your first row can generally be used at the beginning of your second row. This will maximize the locking system to give you a tight fit.

Simply angle the lip side onto the groove side, slide it up against your spacer, and drop the board. It may be required to tap the face of the board to lock it into place.

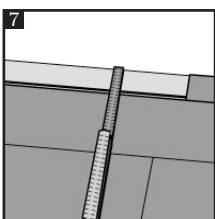


5. Continue installing the boards as instructed above in Step 4 within the second row. Place the board tightly against the end of the first board in row 2 and drop the board to lock it into place. If necessary you can tap the board to fully lock the board into place.

**You must complete Step 4 before locking the ends of the boards together.*



6. After 2-3 rows installed, you can re-position the floor to adjust the distance from the walls to ensure the 3/8" expansion gap on all sides.



7. When installing the last row, the width of the boards must be at least 2" wide. It may be necessary to also cut the first row boards to achieve this width on the last row. It may be beneficial to glue the ends of the last row together when locking the boards into place.

The following situations are beyond the warranty: minor color, shade, or texture variations between samples, printed color photography and the actual material.

MAINTENANCE GUIDE

You have just installed Laminate Flooring from Designer Choice. Your new resilient floor was produced under the highest quality standards and will provide you with a lifetime of enjoyment. Although Designer Choice Laminate is one of the easiest floors to maintain, please follow the recommendations in this guide to retain the fresh look and protect the factory finish of your flooring. After installing the floor, we recommend you clean and remove any loose dirt or debris that may have been introduced during the installation process. Also, in order to protect the floor surface from abrasive dirt and debris, we recommend installing an effective barrier system to limit the amount of moisture, dirt, and grit that may enter the flooring area. Please check any new cleaning agents on a small test patch of the floor in an inconspicuous area, and avoid using harsh cleaners or alcohol/ammonia-based cleaning products.

1. Sweep and vacuum the floor surface to ensure removal of all loose dust, dirt, and debris.

2. Do not allow pets with unclipped nails to damage your Designer Choice Laminate. It may result in severe scratching to the surface. The same is true for any high-heeled shoes that do not have proper tips on the heels.

3. Avoid exposure to direct sunlight for prolonged periods of time. During peak sunlight hours, use drapes or blinds to minimize direct sunlight. Most types of flooring will be affected by continuous strong sunlight. To avoid an uneven appearance, please consider relocating area rugs. In addition, excessive temperatures are not good for resilient floors. Some natural ventilation or intermittent air conditioning in vacant homes should be considered. Long-term continuous inside temperatures over 95° F combined with strong direct sunlight will damage your Designer Choice Laminate and cause the installation to fail.

4. Some hand wiping may be required to remove tough spots and spills. Always sweep or vacuum your floor before cleaning so that all loose dirt and particles are removed. For best results do not use combination cleaner/finish products.

5. DO NOT WAX your Designer Choice Laminate floor. The surface of your floor is very dense and non-porous, which prevents wax from penetrating and thus builds up a bed for yellowing and dirt collection. The same non-porous feature also provides all the protection against wear and staining that you will need. Your Designer Choice Laminate floor has been designed for easy maintenance.